

Transportation, Distribution, and Logistics Career Cluster

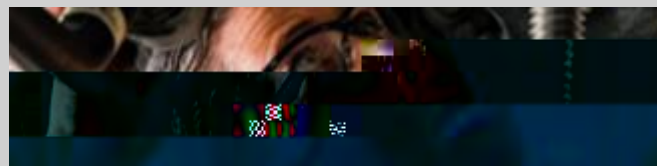
The Transportation, Distribution, and Logistics Career Cluster focuses on planning, management, and movement of people, materials, and goods by road, pipeline, air, rail, and water. It also includes transportation infrastructure planning and management, logistics services, and more.

about processes, technologies, and materials used in reconstructing vehicles.

Secondary Courses for High School Credit

Level 1
 Principles of Transportation Systems
 Basic Collision Repair and Refinishing
 Small Engine Technology I

Level 2
 Introduction to Transportation Technology
 Small Engine Technology II
 Occupational Safety and Environmental Technology
 Automotive Basic



Example Postsecondary Opportunities

Apprenticeships

Associate Degrees

Bachelor's Degrees

Heavy Equipment Maintenance Technology

Additional Stackable IBCs/License
 Automobile and Light Truck Certification (AA9)



Example Aligned Occupations

Automotive Service Technicians and Mechanics
 Median Wage: \$44,809
 Annual Opening: 6,285
 10-Year Growth: 10%

Bus and Truck Mechanics and Diesel Engine Specialists
 Median Wage: \$50,967
 Annual Opening: 3,096
 10-Year Growth: 19%

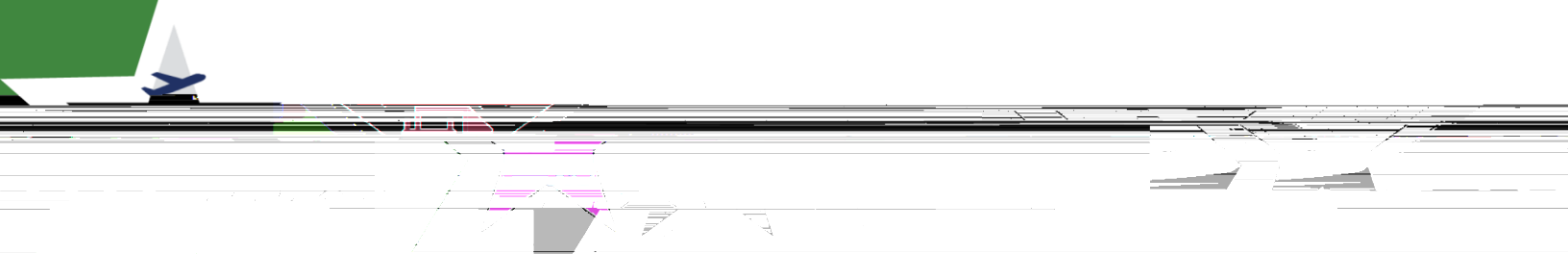
First-Line Supervisors of Mechanics, Installers, and Repairers
 Median Wage: \$66,535
 Annual Opening: 5,019
 10-Year Growth: 19%

Automotive and Collision Repair

- ASE Entry Level Automobile Engine Performance (EP)
- ASE Entry Level Automobile Engine Repair (ER)
- ASE Entry Level Automobile Heating and Air Conditioning (AC)
- ASE Entry Level Automobile Manual Drive Train and Axles (MD)
- ASE Entry Level Automobile Service Technology
- ASE Entry Level Automobile Suspension and Steering (SS)
- ASE Entry Level Collision Mechanical and Electrical Components (ME)

- ASE Entry Level Collision Structural Analysis and Damage Repair (SR)
- ASE Entry Level Collision Painting and Refinishing (PR)
- ASE Entry Level Collision Structural Analysis and Damage Repair
- ASE Refrigerant Recovery and Recycling
- Principles of Small Engine Technology Certification
- Small Engine Technology
- Industrial Technology Maintenance (ITM) Basic Mechanical Systems
- Industrial Technology Maintenance (ITM) Maintenance Operations
- Industrial Technology Maintenance (ITM) Electrical Systems
- Industrial Technology Maintenance (ITM) Maintenance Welding
- Industrial Technology Maintenance (ITM) Basic Pneumatic Systems

Successful completion of the Automotive and Collision Repair program of study will fulfill requirements of the 030-Buse163 (s)4 (s)4 ()72 aunnst enosement





Transportation, Distribution, and Logistics Career Cluster

Statewide Program of Study: Automotive and Collision Repair



Course Information

Course Information

Level 3

Course

Prerequisites | Corequisites

